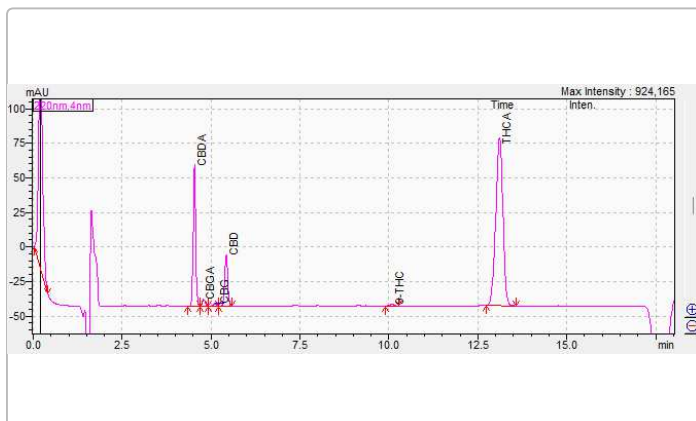


## Black Cherry OG - 25pk - 1g

Sample ID: HR20250491055  
Strain: Black Cherry OG - 25pk - 1g  
Matrix: Plant  
Type: Flower - Cured  
Sample Size: ; Batch:

Produced:  
Collected: 04/21/2025  
Received: 04/21/2025  
Completed: 04/23/2025  
Batch#:

Client  
Pressure  
Lic. #  
222 E 32nd St  
Los Angeles, CA 90011



### Summary

Test	Date Tested	Result
Batch	04/21/2025	Complete
Cannabinoids	04/21/2025	Complete
Moisture		8.06%

### Cannabinoids

Complete

0.23%	10.95%	37.84%
Δ9-THC	Total CBD	Sum of Total Cannabinoids

Analyte	LOD mg/g	LOQ mg/g	Result %	Result mg/g
THCa	0.20000	0.61000	25.05	250.54
Δ9-THC	0.15000	0.45000	0.23	2.33
Δ8-THC	0.14000	0.42000	ND	ND
THCV	0.15000	0.44000	ND	ND
CBDa	0.10000	0.31000	7.50	74.95
CBD	0.15000	0.45000	4.37	43.72
CBN	0.16000	0.50000	ND	ND
CBGa	0.29000	0.88000	0.43	4.34
CBG	0.13000	0.39000	0.26	2.56
CBC	0.14000	0.42000	ND	ND
Total THC			22.21	222.05
Total CBD			10.95	109.45
Total			33.79	337.87
Sum of Cannabinoids			37.84	378.44

Determination of Cannabinoids by HPLC, HL223

Total THC = Δ9-THCa \* 0.877 + Δ9-THC

Total CBD = CBDa \* 0.877 + CBD

ND = Not Detected; NR = Not Reported; LOD = Limit of Detection; The reported result is based on a sample weight with the applicable moisture content for that sample; Unless otherwise stated all quality control samples performed within specifications established by the Laboratory. HL105.10-01. Cannabinoid Testing: Pass/Fail decision determined by Department of Cannabis Control CCR title 4 Division 19 §15724. Water activity testing: Pass/Fail decision determined by Department of Cannabis Control CCR title 4 Division 19 §15717.



*Ming*

Ming Li - General Manager  
04/23/2025

Condent LIMS  
All Rights Reserved  
coa.support@condentlms.com  
(866) 506-5866  
www.condentlms.com



ISO 17025 accredited by A2LA (Certificate No: 4074.01 & 4074.02). Sampling Procedure: SOP HL 110.2; Foreign Material: UV light/Microscope SOP HL 323, SOP HL 324; Water Activity: Water Activity Meter SOP HL 238; Moisture: Drying Oven SOP HL217.1; All LQC ran in accordance with 4 CCR sec. 15730. This product has been tested by Harrens Lab Inc. using valid testing methodologies and a quality system as required by state law. Values reported relate only to the product tested. Harrens Lab Inc. makes no claims as to the efficacy, safety or other risks associated with any detected or non-detected levels of any compounds reported herein. This Certificate shall not be reproduced except in full, without the written approval of Harrens Lab Inc.